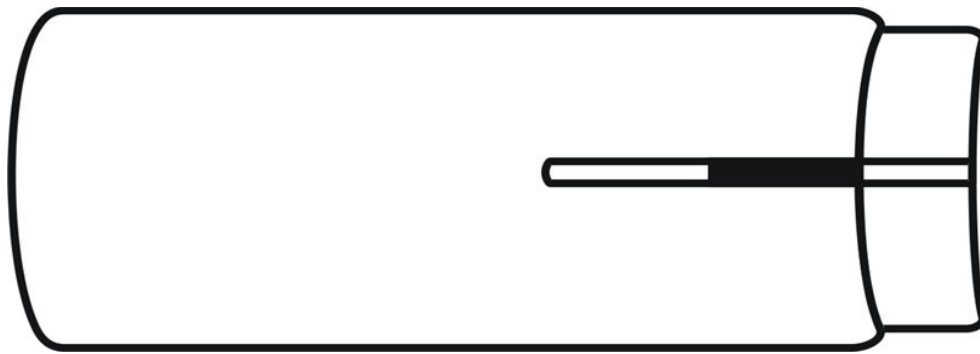


technicalthreads

Drop-In Anchor

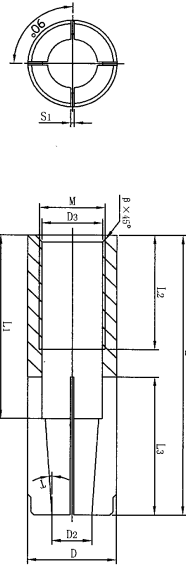


- Typical Material: Carbon Steel
- Zinc Plating Standard
- Size Range
 - Standard 1/4" through 3/4"
- Length
 - Standard sizes 1" through 3-1/8" long

PORTEOUS FASTENER CO.

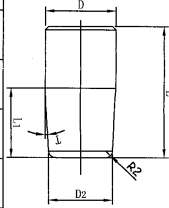
DROP-IN ANCHOR

1 LONG SHIELD

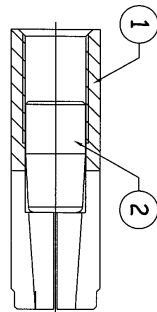


SIZE	D	L	S1	D2	D3	L1	L2	L3	β	T	M
U 3/8"	Ø0.50"	1.58"	0.06"	Ø0.22"	Ø0.32"	0.91"	0.60"	0.79"	1.2	3°30'	3/8-16 UNC
U 1/2"	Ø0.63"	2.00"	0.06"	Ø0.32"	Ø0.43"	1.07"	0.79"	1.00"	1.5	3°	1/2-13 UNC
U 5/8"	Ø0.88"	2.50"	0.10"	Ø0.43"	Ø0.54"	1.38"	1.19"	1.26"	1.5	2°30'	5/8-11 UNC
U 3/4"	Ø1.00"	3.19"	0.12"	Ø0.56"	Ø0.69"	1.97"	1.19"	1.60"	2.0	2°	3/4-10 UNC
TOL	±0.002"	±0.02"	0	±0.008"	0	±0.004"	0	±0.008"	0	±20'	±20'

2 LONG INSERT

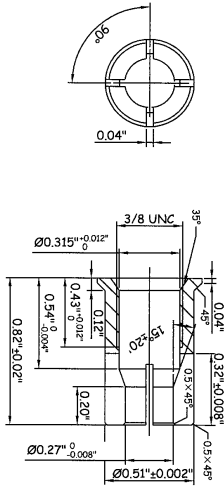


SIZE	D	D2	L	L1	T
3/8"	Ø0.32"	Ø0.28"	0.63"	0.29"	3°30'
1/2"	Ø0.41"	Ø0.37"	0.79"	0.42"	3°
5/8"	Ø0.54"	Ø0.49"	1.19"	0.59"	2°30'
3/4"	Ø0.65"	Ø0.61"	1.19"	0.63"	2°
TOL	0	±0.003"	±0.004"	±0.008"	±0.008"

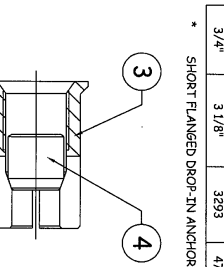
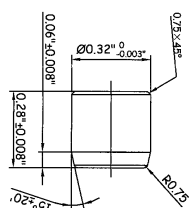


ANCHOR DIA. (in)	EMBEDMENT DEPTH (in)	TENSION (LBS)	SHEAR (LBS)
3/8"	3 1/8"	442	468
1/2"	2"	1623	1729
5/8"	2 1/2"	1396	3193
3/4"	3 1/8"	3293	4776

3 SHORT FLANGED SHIELD



4 SHORT INSERT



INSTALLATION NOTES:

- CLEAN HOLES OF DEBRIS AND DUST BEFORE INSTALLATION.
- ANCHORS SHALL NOT BE INSTALLED BEFORE CONCRETE HAS DEVELOPED DESIGN STRENGTH.
- SOUD-SET ANCHORS SHALL BE USED WITH 1008 OR EQUIVALENT STEEL MACHINE SCREWS. MACHINE SCREWS REQUIRE A MINIMUM 1/2" ENGAGEMENT THREADS.
- CONCRETE SHALL CONFORM TO AMERICAN CONCRETE INSTITUTE MANUAL OF CONCRETE PRACTICE AC 301 WITH NORMAL WEIGHT AND A MINIMUM COMPRESSION STRENGTH (f'c) OF 3000 psi AT 28 DAYS.
- ALLOWABLE LOADS ARE BASED ON ULTIMATE DIVIDED BY 4.
- RECOMMENDED EDGE DISTANCE: FOR 100% EFFICIENCY, USE DIAMETER OF ANCHOR MULTIPLIED BY 14. FOR 50% EFFICIENCY, USE DIAMETER MULTIPLIED BY 7.
- RECOMMENDED CENTER TO CENTER DISTANCE: FOR 100% EFFICIENCY, USE 4 TIMES THE EMBEDMENT DISTANCE. FOR 50% EFFICIENCY, USE 2 TIMES EMBEDMENT DISTANCE.

GENERAL NOTES:

- THIS APPROVAL DOCUMENT REPRESENTS PORTEOUS FASTENER CO. DROP-IN ANCHOR ANALYZED WITH THE PROVISION SET FOR THE ISSUANCE OF A NOTICE OF ACCEPTANCE (NOA) BY MIAMI-DADE COUNTY PRODUCT CONTROL DIVISION FOR HIGH VELOCITY HURRICANE ZONE (HVHZ) OF FLORIDA BUILDING CODE 2007.
- REFERENCE SEE CONSULTING TEST REPORTS
- REPORT NO. 77156 DATED 12/07/07
- NO ALLOWABLE STRESS INCREASE HAS BEEN USED IN PREPARATION OF THIS DOCUMENT.
- THESE PRODUCT DOCUMENTS ARE GENERIC AND DO NOT INCLUDE INFORMATION FOR SITE-SPECIFIC APPLICATION.
- USE OF THESE APPROVAL DOCUMENTS SHALL COMPLY WITH CHAPTER 61G15-23 OF THE FLORIDA ADMINISTRATIVE CODE.
- ANY MODIFICATION OR ADDITION TO THESE APPROVAL DOCUMENTS ARE NOT PERMITTED
- LOCATION OF MANUFACTURING: YUYAO NANSHAN DEVELOPMENT CO. LTD. INDUSTRIAL PARK WUYIA VILLAGE, LUBU TOWN YUYOU CITY, ZHEJIANG, CHINA

REVISIONS

NO.	DESCRIPTION	BY	DATE
A	ADDED LOCATION OF MANUF.	JLR	03.18.09
B	CONVERTED MM TO INCHES	JLR	04.07.09

TITLE: DROP-IN ANCHOR NOTES & ANCHORS DETAILS
 PREPARED FOR: PORTEOUS FASTENERS Co. 1040 WATSON CENTER ROAD CARSON, CA 90745
 PH: 310.549.9180 FX: 310.835.0415



Approved as complying with the Florida Building Code
 Date: 05/10/09
 NOA#: 08-0320-07
 Miami-Dade Product Control Division
 By: [Signature]

DATE: 09.26.08
 DWN BY: GRN
 CHK BY: HN
 SCALE: NTS
 DWG #: PFC001
 SHEET: 1 OF 1

[Signature]
 4-7-09
 KRISTINA S. DAUGHERTY
 FLORIDA P. E. NO. 12825
 1117 N. WINDY HOLLOW STREET
 OVEED, FL 32785