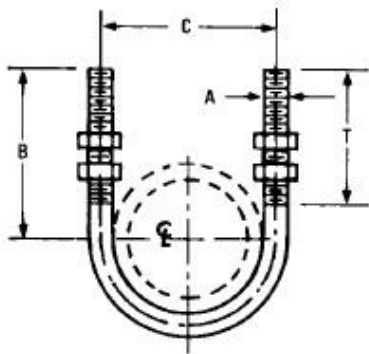


## Style 137 with double nuts on each side



- Material:** Carbon steel, 304 (137SS) and 316 (137SX) stainless steel
- Finish:** Plain, electro-galvanized.
- Service:** Designed for support or guide of heavy loads.
- Approvals:** Complies with Federal Specifications WW-H-171-E (Type# 24), A-A-1192 A (Type# 24), and MSS SP-58 and SP-69 (Type# 24).
- Ordering:** Specify pipe size, figure number and finish. Sizes 1/2" to 1" can be furnished with 3/8" rod size.
- Notes:** U-bolts with longer tangents or longer threads are available. Also available with plastic coating.
- Available domestic**

PIPE SIZE	PIPE OD	A	B	C	T	WGT EACH (lbs)	MAX REC LOAD (lbs)
1/2	0.840	1/4-20	2 3/4	1 3/16	2 3/8	0.10	485
3/4	1.050	1/4-20	2 3/4	1 3/8	2 3/8	0.10	485
1	1.315	1/4-20	2 3/4	1 5/8	2 3/8	0.10	485
1 1/4	1.660	3/8-16	2 7/8	2 1/16	2 3/8	0.26	1220
1 1/2	1.900	3/8-16	3	2 3/8	2 1/2	0.28	1220
2	2.375	3/8-16	3 1/4	2 13/16	2 1/2	0.32	1220
2 1/2	2.875	1/2-13	3 3/4	3 7/16	3	0.70	2260
3	3.500	1/2-13	4	4 1/16	3	0.76	2260
3 1/2	4.000	1/2-13	4 1/4	4 9/16	3	0.80	2260
4	4.500	1/2-13	4 1/2	5 1/16	3	0.86	2260
5	5.563	1/2-13	5	6 1/8	3	1.00	2260
6	6.625	5/8-11	6 1/8	7 3/8	3 3/4	1.98	3620
8	8.625	5/8-11	7 1/8	9 3/8	3 3/4	2.26	3620
10	10.750	3/4-10	8 3/8	11 5/8	4	3.94	5420
12	12.750	7/8-9	9 5/8	13 3/4	4 1/4	6.40	7540
14	14.000	7/8-9	10 1/4	15	4 3/4	8.30	7540
16	16.000	7/8-9	11 1/4	17	4 3/4	9.20	7540
18	18.000	1-8	12 5/8	19 1/8	4 3/4	13.50	9920
20	20.000	1-8	13 5/8	21 1/8	4 3/4	14.60	9920
24	24.000	1-8	15 5/8	25 1/8	4 3/4	16.90	9920